



# LEWIS COUNTY PROPERTIES GLENFIELD INDUSTRIAL SITE BLUE STREET GLENFIELD, NY

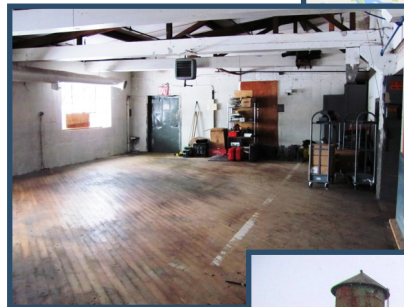
## PROPERTY HIGHLIGHTS

THIS INDUSTRIAL SITE, located in the Village of Glenfield, sits on 45 acres of land. The building consists of 2 levels with approximately 60,000sq.ft. on each level. The space within the building is largely open and could easily be adapted to a range of commercial applications. The building contains multiple loading docks and has ample space for a commercial, industrial, office or warehousing application. The property has easy access to NYS Route 12 and currently does not have DEC actions filed against it.



## SITE UTILITIES

- ◇ 3 Phase Electric—National Grid
  - ◇ 2—400A/3-phase on site
- ◇ Sewer & Water—Municipal
  - ◇ Curbside
- ◇ Natural Gas—NYSEG
  - ◇ Curbside
- ◇ Telecom—North Country Broad-band, Frontier, Spectrum



## PROPERTY SPECIFICS

- ◇ Former Use of Site—Formally owned by the Beaverite Corporation and manufactured notebook products
- ◇ Zoning - Industrial
- ◇ Tax ID: 259.00-03.100
- ◇ Access to Rail—None
- ◇ Distance to Watertown Int'l Airport—40 miles
- ◇ Distance to Syracuse Int'l Airport—91 miles
- ◇ Distance to Interstate 81—83 miles
- ◇ Distance to NYS Thruway—61 miles
- ◇ Distance to Canada—60 miles
- ◇ Located in the Village of Glenfield and Town of Martinsburg



For more information, contact Lewis County Economic Development/IDA:  
315-376-3014 / [naturallylewis.com](http://naturallylewis.com) / [info@naturallylewis.com](mailto:info@naturallylewis.com)